

FINAO'S GUIDE TO STYLE

or, everything I ever wanted to know about creating Finao products but was afraid to ask...

FINAO & PROSELECT



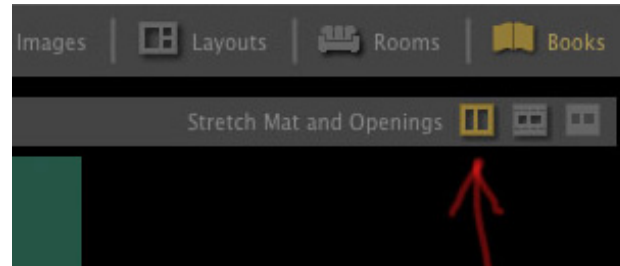
FINAO & PROSELECT

As a courtesy to our customers who use ProSelect, we have created a series of book designs & basic page templates that are compatible with our most popular products. Each has been broken down into categories so that you need only upload those book designs that fit your business model (i.e. if you only do square format albums, you only need to import the square book designs for your desired products. There is no need to upload everything, unless you wish to use everything.

The suggestions represented here are little tips & tricks for using the Finao specific book designs & templates. All support questions regarding the use of ProSelect need to be sent to them directly (www.timeexposure.com). Finao customer service can not answer ProSelect support questions.

HEY! I ONLY HAVE TWO PAGE TEMPLATES

You will notice that we have only created one single page and one double spread template for use with our book designs. These will be automatically stretched to fill the selected book design size if you have the “Stretch Mat and Openings” option selected.

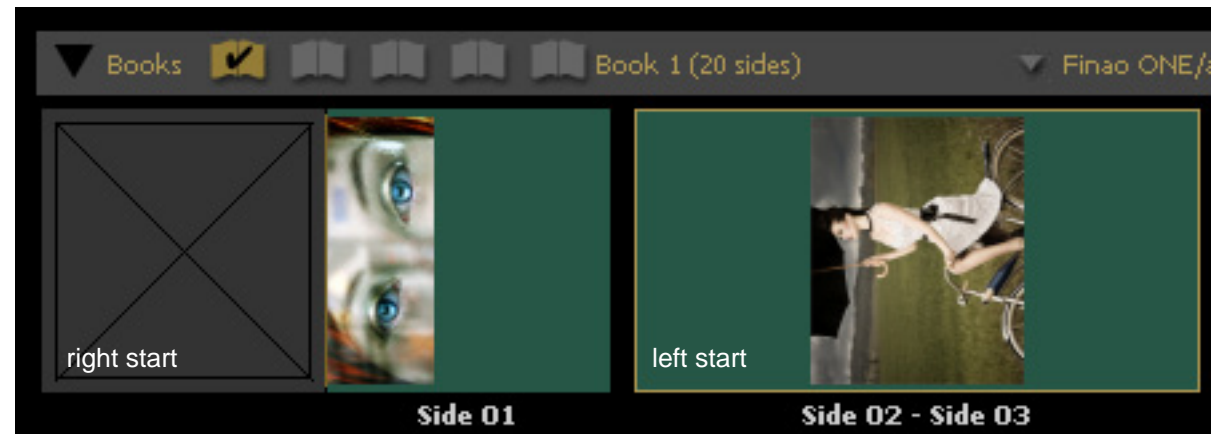


ELEMENTS: CUSTOM VS. STANDARD CAPACITY

Please be aware when designing books for the Elements line. Elements products come in standard capacities of 5, 10, 15 or 20 leaves.

Custom capacities *are* available, however, they are subject to additional fees.

DESIGNING FLIPBOOKS



Due to limitations in the ProSelect software, designing flipbooks is a little strange. To properly layout a flipbook, for proper printing, images need to be rotated 90 degrees counter-clockwise to be viewed properly.

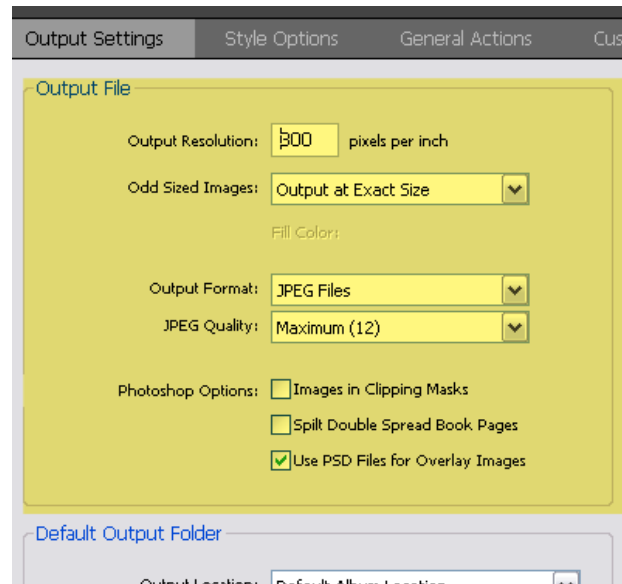
To rotate an image 90 degrees CCW you need to switch to Cropping view (the scissors icon), select the image then click on the “rotate image right” tool button while holding down the Alt/Option key down. This results in a “rotate image left”

PRODUCTION OUTPUT

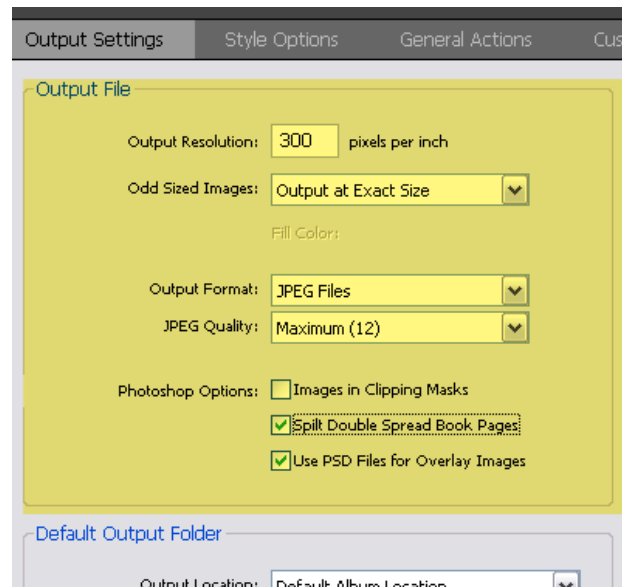
For all Finao products you will need to output images as hi-res JPGs at **exact** size.

In general, you will also want to print in spreads unless you are using an Element product.

For Elements you will want to check the “**Split Double Spread Book Pages**” option before sending your book design to production.



Output settings for ONE, artONE & playBOOKS



Output settings for Elements

